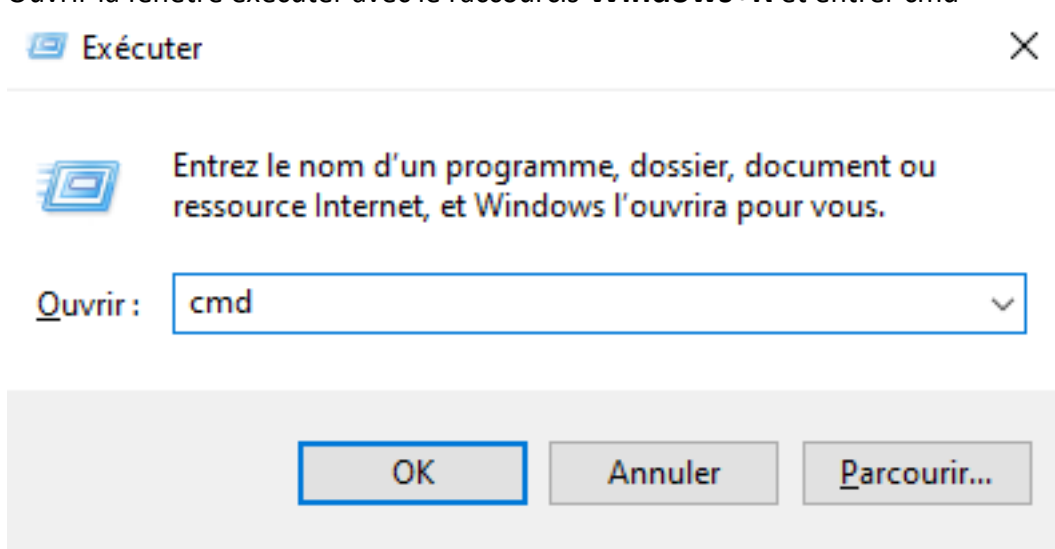


Comment obtenir l'adresse MAC de la carte Ethernet de son ordi ?

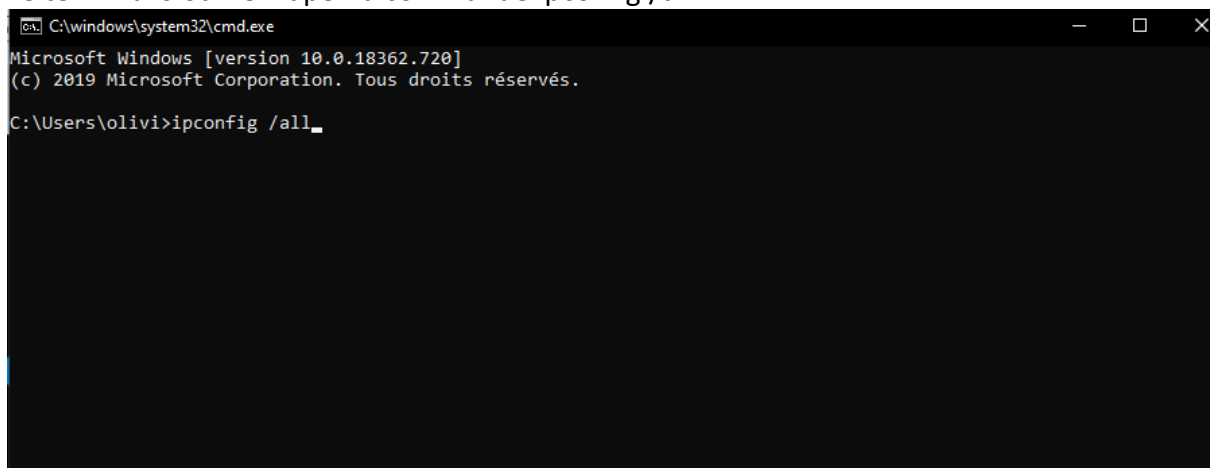
Sur Windows :

- 1) Ouvrir la fenêtre exécuter avec le raccourcis **Windows+R** et entrer cmd

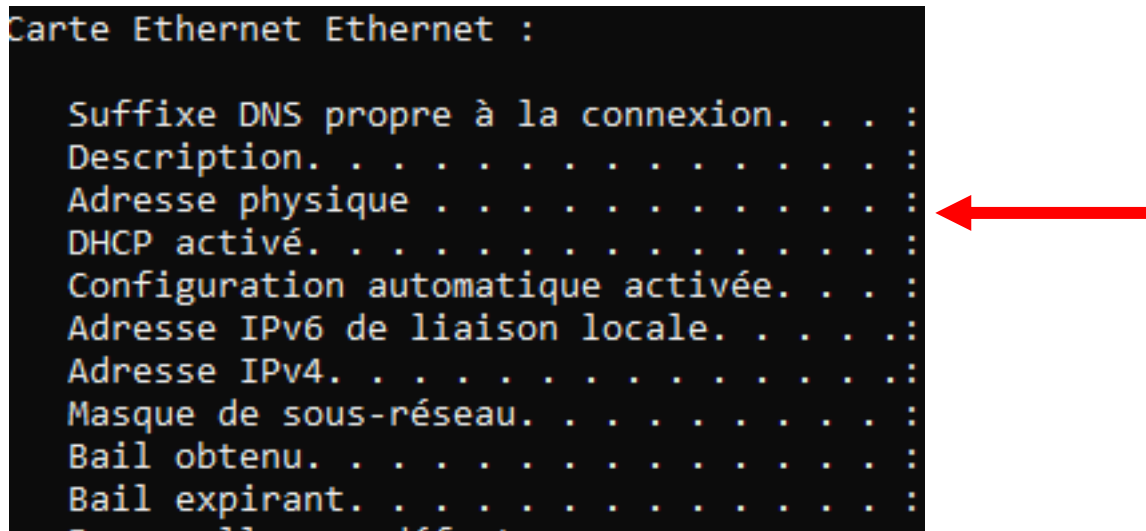


ou chercher cmd dans le menu Démarrer

- 2) Le terminal s'ouvre. Taper la commande ipconfig /all

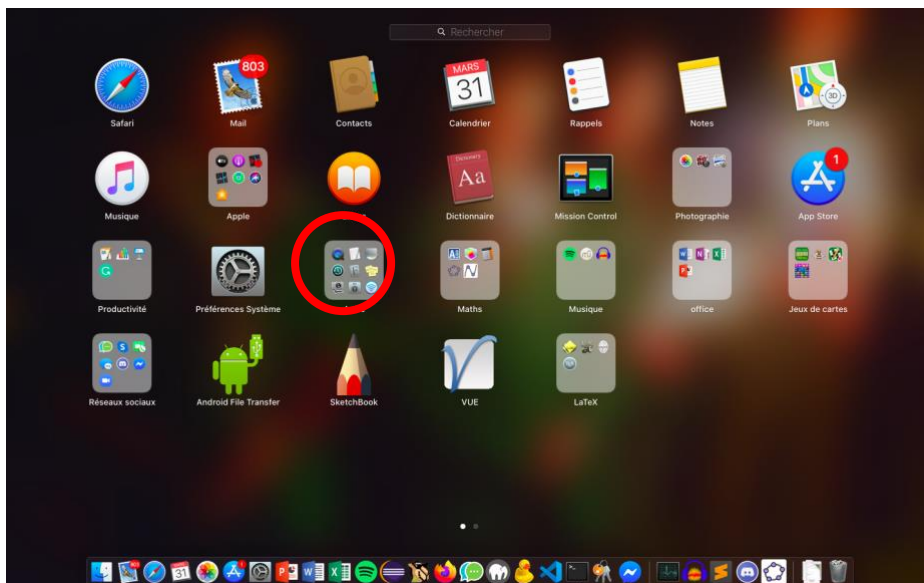


- 3) Dans le résultat, trouver Carte Ethernet Ethernet. L'adresse Mac est écrite en face d'adresse physique.

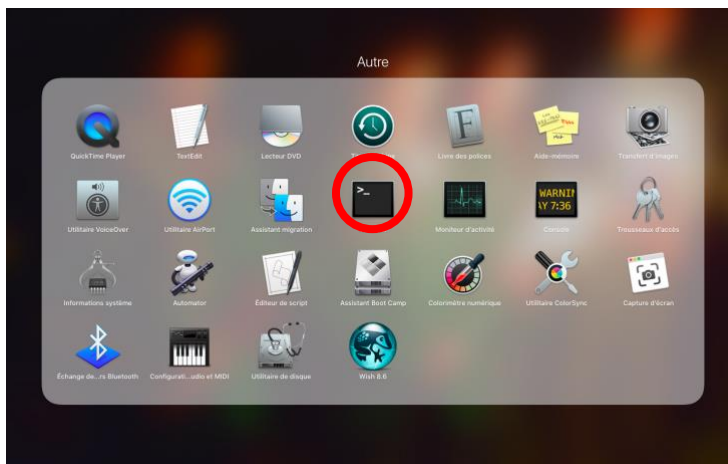


Sur MAC :

- 1) Appuyer F4



2) Dans Autres, ouvrez le terminal :



3) Dans le terminal tapez `ifconfig -a` :

```
perrinevantalton — perrinevantalton@MacBook-Air-de-Perrine — ~ — zsh — 8...
Last login: Tue Mar 31 10:56:32 on ttys000
perrinevantalton@MacBook-Air-de-Perrine ~ % ifconfig -a
```

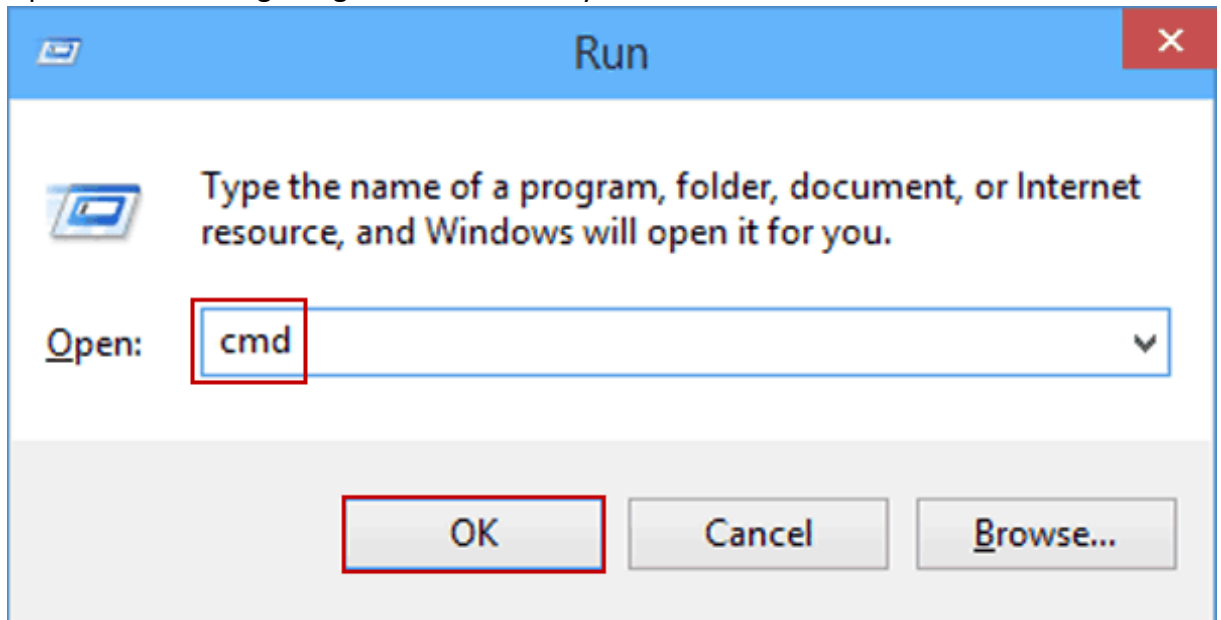
4) Dans le résultat, trouver en0. L'adresse MAC suit « ether ».

```
perrinevantalton — perrinevantalton@MacBook-Air-de-Perrine — ~ — zsh — 8...
Last login: Tue Mar 31 10:56:32 on ttys000
perrinevantalton@MacBook-Air-de-Perrine ~ % ifconfig -a
lo0: flags=8049<UP,LOOPBACK,RUNNING,MULTICAST> mtu 16384
options=1203<RXCSUM, TXCSUM, TXSTATUS, SW_TIMESTAMP>
inet 127.0.0.1 netmask 0xff000000
inet6 ::1 prefixlen 128
inet6 fe80::1%lo0 prefixlen 64 scopeid 0x1
nd6 options=201<PERFORMNUD,DAD>
gif0: flags=8010<POINTOPOINT,MULTICAST> mtu 1280
stf0: flags=0<> mtu 1280
en0: flags=8863<UP,BROADCAST,SMART,RUNNING,SIMPLEX,MULTICAST> mtu 1500
options=400<CHANNEL_IO>
ether c4:b3:01:9b:bc:2e
inet6 fe80::80:1dca:8ac7:bd84%en0 prefixlen 64 secured scopeid 0x4
inet 172.30.136.196 netmask 0xffff8000 broadcast 172.30.255.255
nd6 options=201<PERFORMNUD,DAD>
media: autoselect
status: active
en1: flags=8963<UP,BROADCAST,SMART,RUNNING,PROMISC,SIMPLEX,MULTICAST> mtu 1500
options=460<TS04,TS06,CHANNEL_IO>
ether 82:18:29:7a:86:c0
media: autoselect <full-duplex>
status: inactive
bridge0: flags=8863<UP,BROADCAST,SMART,RUNNING,SIMPLEX,MULTICAST> mtu 1500
```

How to find the MAC address of the Ethernet Card of your Computer ?

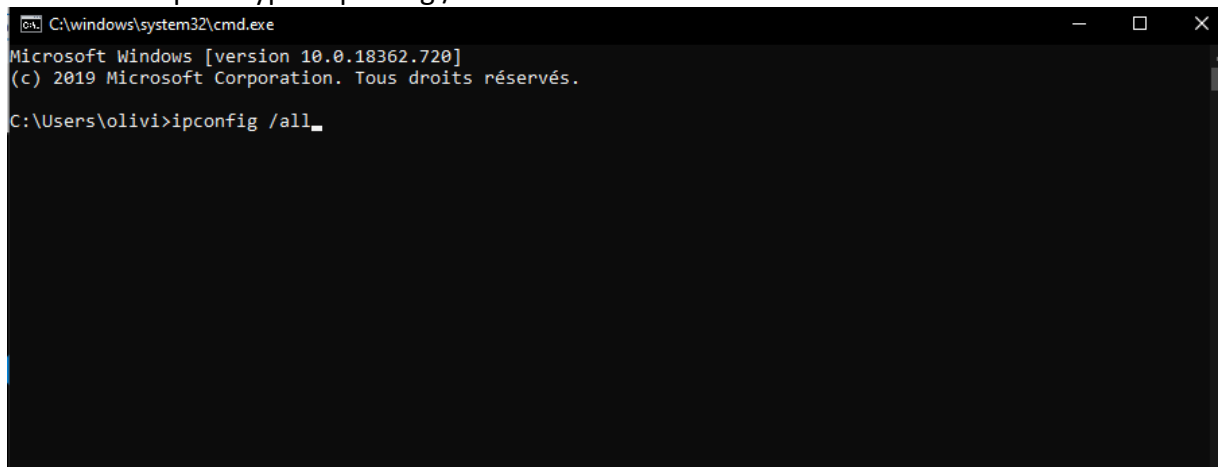
Sur Windows :

- 1) Open the Run dialog using **Windows+R** keys and enter cmd



or Search cmd in the Start Menu

- 2) Terminal is open. Type « ipconfig /all »



- 3) In the result, find Ethernet adapter Ethernet. The MAC address is written after "Physical address".

```
Administrator: Windows PowerShell

C:\Users\Administrator>powershell
Windows PowerShell
Copyright (C) 2013 Microsoft Corporation. All rights reserved.

PS C:\Users\Administrator> ipconfig /all

Windows IP Configuration

    Host Name . . . . . : Srv-01-Core
    Primary Dns Suffix . . . . . :
    Node Type . . . . . : Hybrid
    IP Routing Enabled. . . . . : No
    WINS Proxy Enabled. . . . . : No

Ethernet adapter Ethernet:

    Connection-specific DNS Suffix . . :
    Description . . . . . : Intel(R) PRO/1000 MT Desktop Adapter
    Physical Address. . . . . : 08-00-27-98-4C-2C
    DHCP Enabled. . . . . : Yes
    Autoconfiguration Enabled . . . . : Yes
    Link-local IPv6 Address . . . . . : fe80::f5f5:9990:5992:4ecax12(Preferred)
    Autoconfiguration IPv4 Address. . . : 169.254.78.202(Preferred)
    Subnet Mask . . . . . : 255.255.0.0
    Default Gateway . . . . . :
    DHCPv6 IAID . . . . . : 302514215
    DHCPv6 Client DUID. . . . . : 08-01-00-01-1B-D0-D1-B6-08-00-27-98-4C-2C

    DNS Servers . . . . . : fec8:0:0:ffff::1x1
                           fec8:0:0:ffff::2x1
                           fec8:0:0:ffff::3x1
    NetBIOS over Tcpip. . . . . : Enabled

Tunnel adapter isatap.{AD00FEFF-3817-4547-B7FB-7C91AD73D23D}:

    Media State . . . . . : Media disconnected
    Connection-specific DNS Suffix . . :
    Description . . . . . : Microsoft ISATAP Adapter #2
    Physical Address. . . . . : 00-00-00-00-00-00-E8
    DHCP Enabled. . . . . : No
    Autoconfiguration Enabled . . . . : Yes

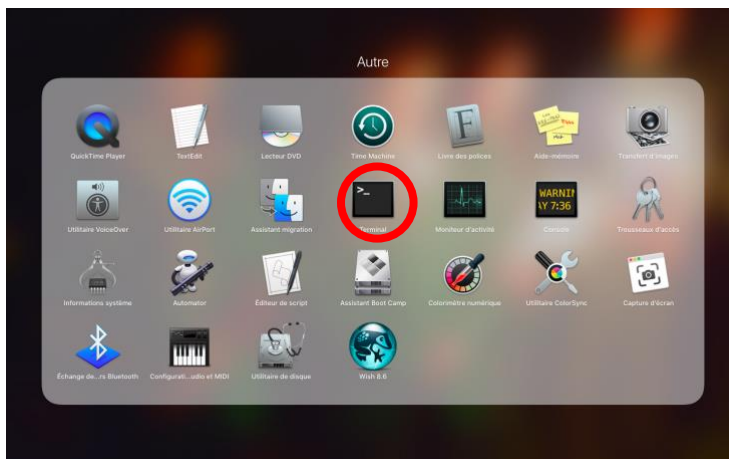
PS C:\Users\Administrator>
```

On MAC :

4) Press F4



5) In Others, open Terminal :



6) In Terminal, type `ifconfig -a` :

```
perrinevantalon — perrinevantalon@MacBook-Air-de-Perrine — ~ — zsh — 8...  
Last login: Tue Mar 31 10:56:32 on ttys000  
perrinevantalon@MacBook-Air-de-Perrine ~ % ifconfig -a
```

7) In the result, find en0. The MAC address follows « ether ».

```
perrinevantalon@MacBook-Air-de-Perrine ~ -zsh - 8...
Last login: Tue Mar 31 10:56:32 on ttys000
perrinevantalon@MacBook-Air-de-Perrine ~ % ifconfig -a
lo0: flags=8049<UP,LOOPBACK,RUNNING,MULTICAST> mtu 16384
    options=1203<RXCSUM, TXCSUM, TXSTATUS, SW_TIMESTAMP>
    inet 127.0.0.1 netmask 0xff000000
    inet6 ::1 prefixlen 128
    inet6 fe80::1%lo0 prefixlen 64 scopeid 0x1
    nd6 options=201<PERFORMNUD,DAD>
gif0: flags=8010<POINTOPOINT,MULTICAST> mtu 1280
stf0: flags=0<> mtu 1280
en0: flags=8863<UP,BROADCAST,SMART,RUNNING,SIMPLEX,MULTICAST> mtu 1500
    options=400<CHANNEL_IO>
    ether c4:b3:01:9b:bc:2e
    inet6 fe0v::0v:1uca:0ac7:0d84%en0 prefixlen 64 secured scopeid 0x4
    inet 172.30.136.196 netmask 0xffff8000 broadcast 172.30.255.255
    nd6 options=201<PERFORMNUD,DAD>
    media: autoselect
    status: active
en1: flags=8963<UP,BROADCAST,SMART,RUNNING,PROMISC,SIMPLEX,MULTICAST> mtu 1500
    options=460<TS04,TS06,CHANNEL_IO>
    ether 82:18:29:7a:86:c0
    media: autoselect <full-duplex>
    status: inactive
bridge0: flags=8863<UP,BROADCAST,SMART,RUNNING,SIMPLEX,MULTICAST> mtu 1500
```